

PCB.焊接图
PCB.WELDING DRAWING

NOTES:

1. Rating: 12VDC 50mA
1. 额定值: 12VDC 50mA
2. Dielectric Strength: 250V AC
2. 耐电压: 250V AC
3. Contact Resistance: ≤100mΩ Max
3. 接触电阻: ≤100mΩ

4. Insulation Resistance: ≥100MΩ

4. 绝缘电阻: ≥100MΩ
5. Life: 20,000 times
5. 寿命: 20,000 times
6. Travel: 0.20±0.10mm
6. 行程: 0.20±0.10mm
7. Operating Temperature Range: -20°C~80°C
7. 工作温度: -20°C~80°C

| Height | |
|--------|-------|
| 43 | 4.3MM |
| 45 | 4.5MM |
| 50 | 5.0MM |

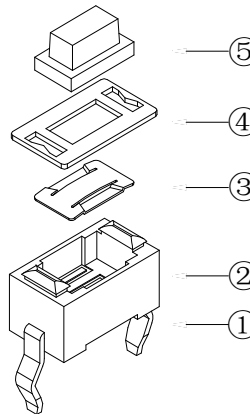
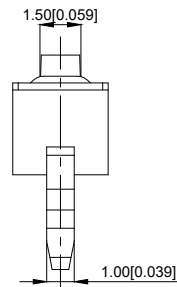
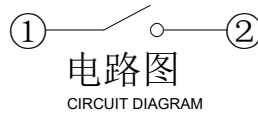
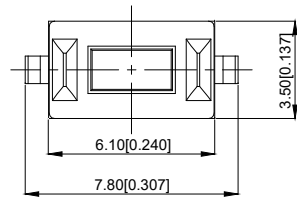
TP1501

Height

Actuation Force

16 : 160gf

26 : 260gf



| 5 | Button 按钮 | PPA | 1 | White 白色 |
|----------|-------------------|----------------|-----------|--------------------------|
| 4 | Cover plate 盖板 | Copper Cover | 1 | Copper-plated tin 镀铜锡 |
| 3 | Shrapnel 弹片 | SUS | 1 | Ag plating 镀银 |
| 2 | Body 本体 | PPA | 1 | Whith Black 白色 黑色 |
| 1 | card 卡件 | Brass | 1 | Ag plating 镀银 |
| NO 序号 | Part name 部件名 | Material 材料 | QTY 数量 | Remark 备注 |

| A4 | | | | |
|-----|------|----------|-------------|-------|
| A3 | | | | |
| A2 | | | | |
| A1 | | | | |
| REV | DATE | REVISION | DESCRIPTION | ISSUE |



| COMMON TOLERANCE | |
|------------------|--------|
| X.XX | ± 0.10 |
| X.X | ± 0.15 |
| X | ± 0.25 |
| ANGULAR | — |

| UNIT | MM | PROJECTED | | PRODUCT NAME: TP1501 <input type="checkbox"/> <input type="checkbox"/> <input type="checkbox"/> <input type="checkbox"/> |
|---|--------|------------|------|--|
| DRAWN BY | SHUHAO | CHECKED BY | COCO | MODEL NO: |
| DATE | 2019 | APPROVAL B | ALEN | Https: www.rocpcu.tw |
| ROCPCU TECHNOLOGY CO.,LTD | | | | |
| Copies are issued in strict confidence and shall not be reproduced or copied, or used as the basic of manufacture or sale of apparatus without permission | | | | |