

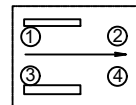
Technical parameter

技术参数

1. Rated current: dc30v 0.1A DC 2V 10 μ A(min)  
1. 额定电流: DC30V 0.1A DC 2V 10μ A(min)
2. High voltage resistance: AC 500V (50 / 60Hz) for one minute  
2. 耐高压: AC 500V (50/60Hz) 持续一分钟
3. Contact impedance: 100 milliohm Max  
3. 接触阻抗: 100毫欧max
4. Insulation impedance: 100 megohm min.500V DC  
4. 绝缘阻抗: 100兆欧min.500V DC

5. Operating force: 350 ± 100gf

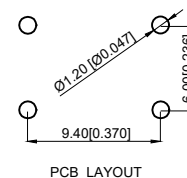
5. 操作力: 350±100gf
6. Full stroke: 4.5mm ± 0.5mm
6. 全行程: 4.5mm±0.5mm
7. Mechanical life: 100000 times
7. 机械寿命: 100,000次
8. Load life: 50000 times
8. 负载寿命: 50,000次
9. Working temperature: -10 °C ~ 70 °C
9. 工作温度: -10 °C~70 °C



Circuit diagram

TP5124 □ 11250

Operation  
1 : self-locking  
2 : lock-free



PCB LAYOUT

7	Crochet hook 钩针	Steel wire 钢丝	1	
6	Terminal 端子	Brass 黄铜	4	Ag plating/min=0.15um 镀银/镀层=0.15um
5	Base 底座	PA66	1	Black 黑色
4	Reed 簧片	Phosphor copper 磷铜	2	Ag plating/min=0.15um 镀银/镀层=0.15um
3	Spring 弹簧	Steel wire 钢丝	1	
2	Cover 盖板	POM	1	white 白色
1	Guide core 导芯	PA66	1	white 白色
NO 序号	Part name 部件名	Material 材料	QTY 数量	Remark 备注

A4				
A3				
A2				
A1				
REV	DATE	REVISION	DESCRIPTION	ISSUE



COMMON TOLERANCE

X.XX	± 0.10
X.X	± 0.15
X	± 0.25

ANGULAR

UNIT	MM	PROJECTED		PRODUCT NAME: TP5124 □ 11250
DRAWN BY	SHUHAO	CHECKED BY	COCO	MODEL NO:
DATE	2019	APPROVAL B	ALEN	Https: www.rocpcu.tw
<b>ROCPCU TECHNOLOGY CO.,LTD</b>				
Copies are issued in strict confidence and shall not be reproduced or copied, or used as the basic of manufacture or sale of apparatus without permission				