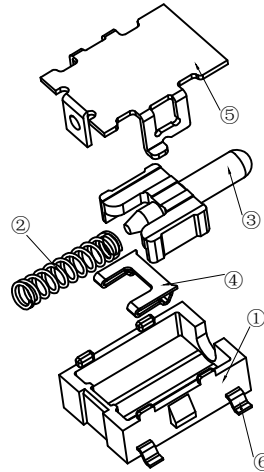
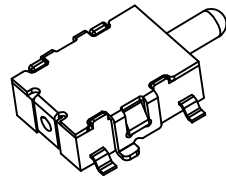
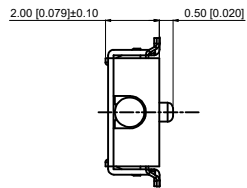
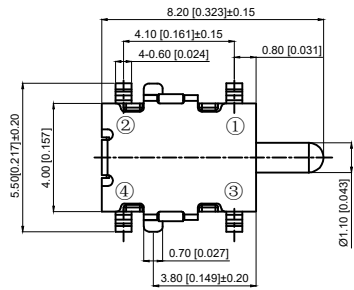


PCB Installation Dimension Drawing
PCB安装尺寸图

- Rated voltage: 16V (DC)
1. 额定电压: 16V (DC)
Rated current: 0.5A
额定电流: 0.5A
- Insulation resistance: $\geq 50M\Omega$
2. 绝缘电阻: $\geq 50M\Omega$
- Contact resistance: $\leq 200m\Omega$
3. 接触电阻: $\leq 200m\Omega$
- Withstand voltage: AC 250V (50Hz)/min
4. 耐压: AC 250V (50Hz)/min

- Operating temperature: $-10^{\circ}C \sim +60^{\circ}C$
5. 使用温度: $-10^{\circ}C \sim +60^{\circ}C$
- Action force: $100 \pm 30gf$
6. 动作力: $100 \pm 30gf$
- Service life: 50000 times
7. 寿命: 50000次



TP7014

Circuit Type

- Normally Open
- Normally closed

6	Terminal 端子	Phosphor copper 磷铜	4	Ag plating 镀银
5	Housing 外壳	Beryllium bronze 铍青铜	1	Ag plating 镀银
4	Reed 簧片	Silver copper 复银铜	1	
3	Handle 按柄	PA46	1	Black 黑色
2	Spring 弹簧	SUS	1	
1	Base 基座	PA46	1	Black 黑色
NO 序号	Part name 部件名	Material 材料	QTY 数量	Remark 备注

A4				
A3				
A2				
A1				
REV	DATE	REVISION	DESCRIPTION	ISSUE



COMMON TOLERANCE

X.XX	± 0.10
X.X	± 0.15
X	± 0.25

ANGULAR

UNIT	MM	PROJECTED		PRODUCT NAME:
DRAWN BY	SHUHAO	CHECKED BY	COCO	MODEL NO: TP7014 <input type="checkbox"/>
DATE	2019	APPROVAL B	ALEN	Https: www.rocpcu.tw
ROCPCU TECHNOLOGY CO.,LTD				
Copies are issued in strict confidence and shall not be reproduced or copied, or used as the basic of manufacture or sale of apparatus without permission				