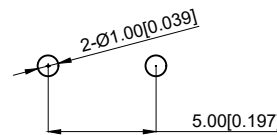


The Main Thchnology Performance

主要技术参数, 性能  
 Rate voltage.current:50mA DC12V  
 额定电流, 电压: 50mA DC12V  
 Contact resistance:≤100mΩ  
 接触电阻: ≤100mΩ  
 Operating Temperature Range: -20℃~80℃  
 工作温度: -20℃~80℃

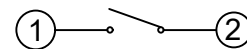
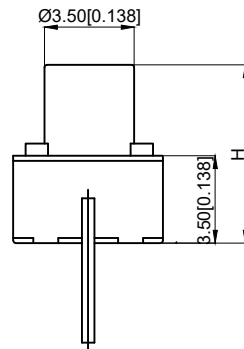
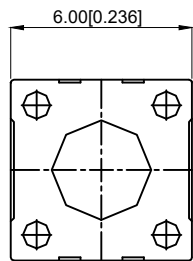
Travel: 0.25±0.10mm  
 行程: 0.25±0.10mm  
 Insulated resistance: ≥100MΩ  
 绝缘电阻: ≥100MΩ  
 Dielectric strength: ≥250VAC/1min  
 介电强度: ≥250VAC/1min  
 Endurance: ≥30000 times  
 寿命: ≥30000 times  
 Operating force: 260±50gf  
 操作力: 260±50gf



TP106126 □ □

Height  
 43 : 4.3mm  
 75 : 7.5mm  
 100: 1.00mm

PCB 焊接图  
 PCB WELDING DRAWING



电路图  
 CIRCUIT DIAGRAM

5	Terminal 端子	Brass 黄铜	1	Ag plating 镀银
4	Base 基座	PPA	1	Black 黑色
3	Contact 弹片	SUS	1	
2	Stem 按钮	PPA	1	Black 黑色
1	Cover 盖板	Brass 黄铜	1	
NO 序号	Part name 部件名	Material 材料	QTY 数量	Remark 备注

A4				
A3				
A2				
A1				
REV	DATE	REVISION	DESCRIPTION	ISSUE



COMMON TOLERANCE	
X.XX	± 0.10
X.X	± 0.15
X	± 0.25
ANGULAR	—

UNIT	MM	PROJECTED		PRODUCT NAME: TP106126 □ □
DRAWN BY	SHUHAO	CHECKED BY	COCO	MODEL NO:
DATE	2019	APPROVAL B	ALEN	Https: www.rocpcu.tw
<b>ROCPCU TECHNOLOGY CO.,LTD</b>				
Copies are issued in strict confidence and shall not be reproduced or copied, or used as the basic of manufacture or sale of apparatus without permission				