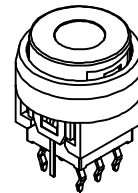
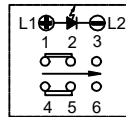
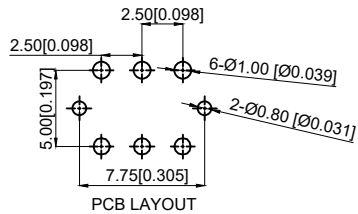
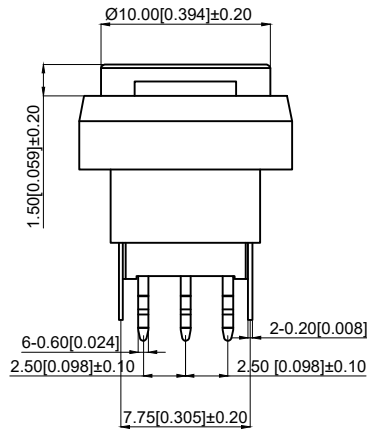
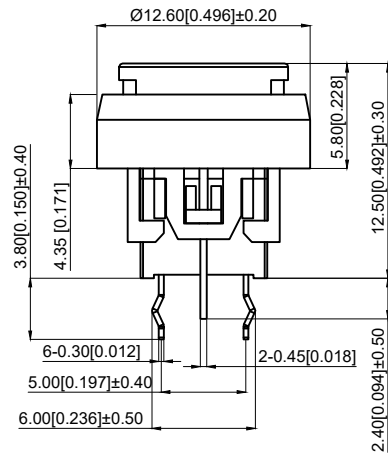


Technical parameter

技术参数

1. Rated current: DC12V 50mA
1. 额定电流: DC12V 50mA
2. High voltage resistance: AC 250 V (50-60 Hz) for 1 minute
2. 耐高压: 交流250伏 (50-60赫兹) 持续1分钟
3. Contact impedance: 100 milliohm Max
3. 接触阻抗: 100毫欧max
4. Insulation impedance: 100 megohm min. 500V DC
4. 绝缘阻抗: 100兆欧min.500V DC
5. Operating force: 150 ± 50gf

5. 操作力: 150±50gf
6. Full stroke: 2.0mm ± 0.2mm
6. 全行程: 2.0mm±0.2mm
7. Conduction stroke: 0.8mm ± 0.4mm
7. 导通行程: 0.8mm±0.4mm
8. Working temperature: -40℃ ~ +85℃
8. 工作温度: -40℃ ~ +85℃
9. Service life: 10000 times
9. 寿命: 10,000次



TP510 □ 111258

Operation  
1 : self-locking  
2 : lock-free

NO 序号	Part name 部件名	Material 材料	QTY 数量	Remark 备注
12	Crochet hook 钩针	Steel wire 钢丝	1	
11	LED		1	green 绿灯
10	Upper cover 上盖	PC	1	milky white 乳白色
9	Transparent lens 透明镜片	PC	1	transparent 透明
8	Inner Kit 内套件	ABS	1	White 白色
7	lid 盖子	POM	1	Black 黑色
6	Fixed frame 固定架	POM	1	Black 黑色
5	Guide core 导芯	POM	1	Black 黑色
4	Spring 弹簧	Steel wire 钢丝	1	
3	Reed 簧片	Phosphor copper 磷铜	2	Ag plating 镀银
2	Base 底座	PA66	1	Black 黑色
1	Terminal 端子	Brass 黄铜	6	Ag plating 镀银

A4				
A3				
A2				
A1				
REV	DATE	REVISION	DESCRIPTION	ISSUE



COMMON TOLERANCE	
X.XX	± 0.10
X.X	± 0.15
X	± 0.25
ANGULAR	—

UNIT	MM	PROJECTED		PRODUCT NAME: TP510 □ 111258
DRAWN BY	SHUHAO	CHECKED BY	COCO	MODEL NO:
DATE	2019	APPROVAL B	ALEN	Https: www.rocpcu.tw
<b>ROCPCU TECHNOLOGY CO.,LTD</b>				
Copies are issued in strict confidence and shall not be reproduced or copied, or used as the basic of manufacture or sale of apparatus without permission				