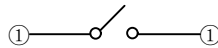
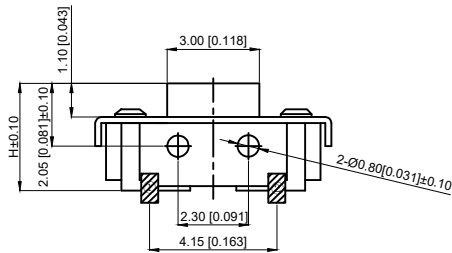
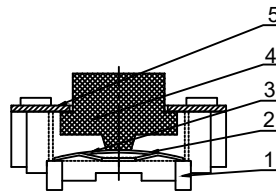
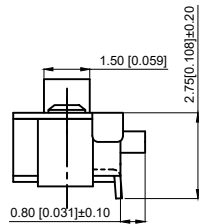


Rated current: 50mA 12V DC
 额定电流: 50mA.12V DC
 Insulation resistance: 100M Ω min, 100V DC
 绝缘电阻: 100MΩmin, 100V DC
 Dielectric strength: 250V AC for 1min
 介电强度: 250V AC for 1min
 Contact resistance: 100M Ω Max
 接触电阻: 100mΩ max
 Operating temperature: - 20 °C ~ 70 °C

工作温度: -20°C~70°C
 Maximum stroke: 0.25 ± 0.1mm
 最大行程: 0.25±0.1mm
 Service life: 50000 times
 寿命: 50000次



TP1042 □ □ □ □
 Height
 25:2.5MM
 Actuation Force
 16 : 160gf
 26 : 260gf



5	Cover plate 盖板	Brass 黄铜	1	silver 镀银
4	Button 按钮	LCP	1	black 黑色
3	Reed 簧片	SUS 不锈钢	1	
2	Base 底座	LCP	1	white 白色
1	Card 卡件	Brass 黄铜	1	silver 镀银
Serial number 序号	Name 名称	Texture of material 材质	Quantity 数量	remarks 备注

A4				
A3				
A2				
A1				
REV	DATE	REVISION	DESCRIPTION	ISSUE



COMMON TOLERANCE	
X.XX	± 0.10
X.X	± 0.15
X	± 0.25
ANGULAR	—

UNIT	MM	PROJECTED		PRODUCT NAME: TP1042 □ □ □ □
DRAWN BY	SHUHAO	CHECKED BY	COCO	MODEL NO:
DATE	2019	APPROVAL B	ALEN	Https: www.rocpcu.tw
ROCPCU TECHNOLOGY CO.,LTD				
Copies are issued in strict confidence and shall not be reproduced or copied, or used as the basic of manufacture or sale of apparatus without permission				