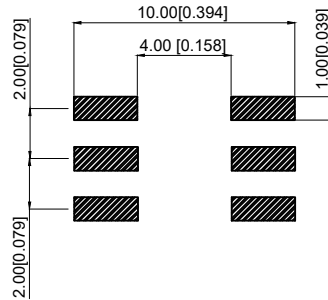
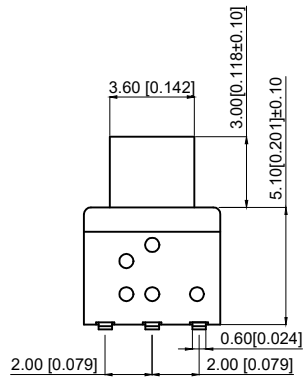


电路简图
 常态: 4与5导通, 2与3导通
 按下: 5与6导通, 1与2导通

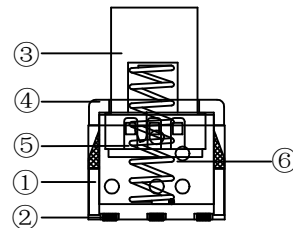
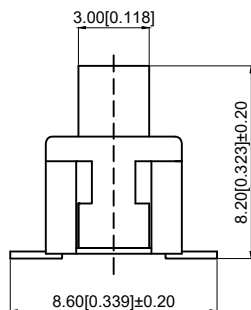


Technical parameter

技术参数

1. Rated current: 100mA 30V DC
1. 额定电流: 100mA 30V DC
2. Contact resistance: ≤ 200mΩ
2. 接触电阻: ≤ 200mΩ
3. Operating force: 260gf ± 50gf
3. 操作力: 260gf ± 50gf

4. Maximum stroke: 2.0 ± 0.2mm
4. 最大行程: 2.0 ± 0.2mm
5. Insulation resistance: ≥ 100MΩ
5. 绝缘电阻: ≥ 100MΩ
6. Service life: 10000 times
6. 寿命: 10000次
7. Switch similar: auto-lock
7. 开关类似: 自锁



7				
6	Spring 弹簧	SUS 不锈钢丝	1	Natural color 本色
5	reed 簧片	Composite silver 复合银	1	Natural color 本色
4	Upper cover 上盖	PPA	1	white 白色
3	handle 按柄	PA6T	1	white 白色
2	terminal 端子	Brass 黄铜	1	Natural color/silver 本色/镀银
1	Pedestal 底座	PPA	1	black 黑色
ITEM	Name	Materials	NUM	COLOR

A4				
A3				
A2				
A1				
REV	DATE	REVISION	DESCRIPTION	ISSUE



COMMON TOLERANCE

X.XX	± 0.10
X.X	± 0.15
X	± 0.25
ANGULAR	—

UNIT	MM	PROJECTED		PRODUCT NAME:
DRAWN BY	FUYUAN	CHECKED BY	COCO	MODEL NO: TP50212180
DATE	2019	APPROVAL B	ALEN	Https: www.rocpcu.tw
ROCPCU TECHNOLOGY CO.,LTD				
Copies are issued in strict confidence and shall not be reproduced or copied, or used as the basic of manufacture or sale of apparatus without permission				