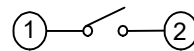
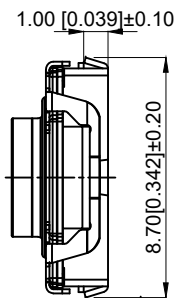
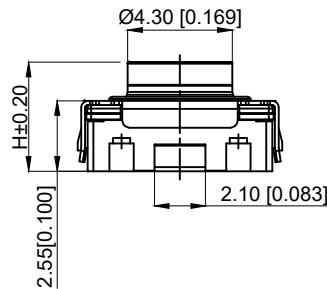


PCB LAND DIMENSION



CIRCUITDIAGRAM

SPECIFICATION

规格

- 1.Rating: DC16V 50mA MAX
- 1.额定值: DC16V 50mA MAX
- 2.Contact resistance:100mΩ MAX
- 2.接触电阻: 100mΩ MAX
- 3.Insulation resistance:100MΩ Min,100V DC
- 3.绝缘电阻: 100MΩMin,100V DC
- 4.Dielectric strength:250VAC
- 4.介电强度: 250VAC

5.Operating temperature range:-40℃ to +90℃

- 5.工作温度范围: -40℃至 +90℃
- 6.Operating life:500,000 cycles
- 6.使用寿命: 500000次循环
- 7.Travel: 0.9±0.2mm
- 7.行程: 0.9±0.2mm
- 8.Waterproof grade: IP67
- 8.防水等级: IP67

TP16023 □ □ □ □ □

Height
395:3.95MM

Actuation Force
400 : 400gf
700 : 700gf
1000 : 1000gf

5	Terminal 端子	Brass 黄铜	1	Ag plating 镀银
4	Base 基座	LCP	1	Black 黑色
3	Contact 弹片	SUS	1	Ag plating 镀银
2	Stem 按钮	Silicone 硅胶	1	Green 绿色
1	Cover 盖板	SUS	1	
NO 序号	Part name 部件名	Material 材料	QTY 数量	Remark 备注

A4				
A3				
A2				
A1				
REV	DATE	REVISION	DESCRIPTION	ISSUE



COMMON TOLERANCE

X.XX	± 0.10
X.X	± 0.15
X	± 0.25

ANGULAR

UNIT	MM	PROJECTED		PRODUCT NAME:
DRAWN BY	SHUHAO	CHECKED BY	COCO	MODEL NO: TP16023 □ □ □ □ □
DATE	2019	APPROVAL B	ALEN	Https: www.rocpu.tw
ROCPU TECHNOLOGY CO.,LTD				
Copies are issued in strict confidence and shall not be reproduced or copied, or used as the basic of manufacture or sale of apparatus without permission				