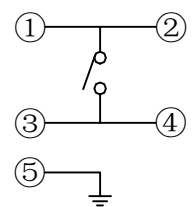
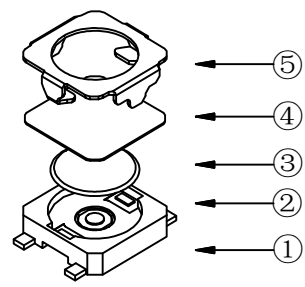
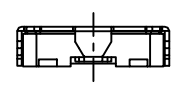
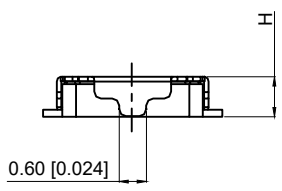


PCB. Welding diagram  
PCB. 焊接图



Circuit diagram  
电路图



**SPECIFICATION**

规范  
 Rating: 50mA.12V DC  
 额定值: 50mA.12V DC  
 Insulation resistance: ≥100MΩ  
 绝缘电阻: ≥100MΩ  
 Dielectric strength: ≥250V AC 1 min  
 抗电强度: ≥250V AC 1 min

Contact resistance: ≤100mΩ max  
 接触电阻: ≤100mΩ max  
 Travel: 0.20±0.1mm  
 行程: 0.20±0.1mm  
 Lifetime: 200000 times  
 寿命: 200000 times

TP1622 □ □ □ □

Height  
85:0.85MM  
 Actuation Force  
18 : 180gf  
26 : 260gf

5	Cover plate 盖板	SUS	1	Clean 清洗
4	Dustproof film 防尘膜	Poly 聚酰亚胺	1	Orange 橙黄色
3	Shrapnel 弹片	SUS	1	Silvering 镀银
2	Essence 本体	LCP	1	Black 黑色
1	Card 卡件	Phosphor bronze 磷铜	1	Silvering 镀银
NO 序号	Part name 部件名	Material 材料	QTY 数量	Remark 备注

A4				
A3				
A2				
A1				
REV	DATE	REVISION	DESCRIPTION	ISSUE



COMMON TOLERANCE	
X.XX	± 0.10
X.X	± 0.15
X	± 0.25
ANGULAR	—

UNIT	MM	PROJECTED	
DRAWN BY	SHUHAO	CHECKED BY	COCO
DATE	2019	APPROVAL B	ALEN

PRODUCT NAME: TP1622 □ □ □ 85  
 MODEL NO:  
 Https: www.rocpcu.tw

**ROCPCU TECHNOLOGY CO., LTD**

Copies are issued in strict confidence and shall not be reproduced or copied, or used as the basic of manufacture or sale of apparatus without permission