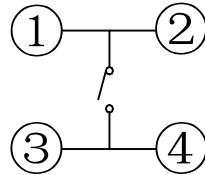
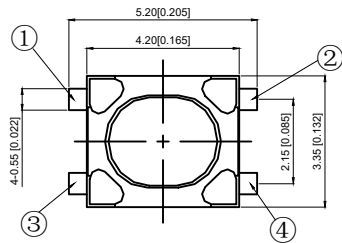
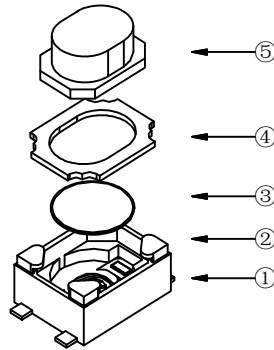
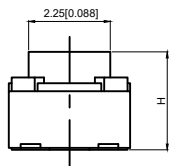


PCB 焊接图  
PCB.WELDING DRAWING



电路图  
CIRCUIT DIAGRAM



NOTES:

1. Rating: 12VDC 50mA  
1. 额定值: 12VDC 50mA
2. Dielectric Strength: 250V AC  
2. 耐电压: 250V AC
3. Contact Resistance: ≤100mΩ Max  
3. 接触电阻: ≤100mΩ

4. Insulation Resistance: ≥100MΩ  
4. 绝缘电阻: ≥100MΩ
5. Life: 100,000 times  
5. 寿命: 100,000 times
6. Travel: 0.20±0.1mm  
6. 行程: 0.20 + 0.1mm
7. Operating Temperature: -20 to +80°C  
7. 使用温度: -20 to +80°C

TP1562 □ □ □ □

Height  
25: 2.5MM

Actuation Force  
16 : 160gf  
26 : 260gf

5	Button 按钮	PPA	1	White 白色
4	Cover plate 盖板	Phosphorous copper	1	tin-plating 镀锡
3	Shrapnel 弹片	SUS	1	Ag plating 镀银
2	Pedestal 基座	LCP	1	White 白色
1	Terminal 端子	Brass	4	Ag plating 镀银
NO 序号	Part name 部件名	Material 材料	QTY 数量	Remark 备注

A4				
A3				
A2				
A1				
REV	DATE	REVISION	DESCRIPTION	ISSUE



COMMON TOLERANCE	
X.XX	± 0.10
X.X	± 0.15
X	± 0.25
ANGULAR	—

UNIT	MM	PROJECTED		PRODUCT NAME: TP1562 □ □ □ □
DRAWN BY	SHUHAO	CHECKED BY	COCO	MODEL NO:
DATE	2019	APPROVAL B	ALEN	Https: www.rocpcu.tw
<b>ROCPCU TECHNOLOGY CO., LTD</b>				
Copies are issued in strict confidence and shall not be reproduced or copied, or used as the basic of manufacture or sale of apparatus without permission				