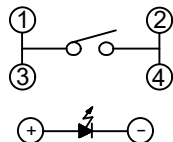
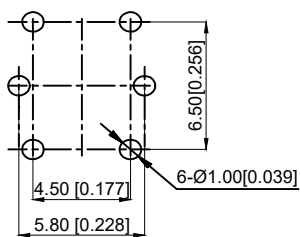


CIRCUIT



PCB LAYOUT



NOTES:

1. Rating: 12VDC 50mA
2. Dielectric Strength: 250V AC
3. Contact Resistance: ≤100mΩ Max
4. Insulation Resistance: ≥100MΩ

5. Operating Force: 260±50gf

5. 操作力: 260±50gf
6. Life: 100,000 times
7. Travel: 0.25±0.1mm
8. Operating Temperature: -20 to +70°C

TPC03-100L □

LED COLOR

LED COLOR	
0	Other
1	Red
2	Yellow
3	Green
4	Blue
5	White

NO 序号	Part name 部件名	Material 材料	QTY 数量	Remark 备注
5	LED		1	white 白色
4	Button 按钮	POM	1	
3	Shrapnel 弹片	SUS	1	
2	Pedestal 基座	PA66	1	
1	Terminal 端子	Brass	4	Ag plating 镀银

REV	DATE	REVISION	DESCRIPTION	ISSUE
A4				
A3				
A2				
A1				



COMMON TOLERANCE	
X.XX	± 0.10
X.X	± 0.15
X	± 0.25
ANGULAR	—

UNIT	MM	PROJECTED	PRODUCT NAME: TPC03-100L □
DRAWN BY	SHUHAO	CHECKED BY	COCO
DATE	2019	APPROVAL B	ALEN
MODEL NO: https://www.rocpcu.tw			
ROCPCU TECHNOLOGY CO., LTD			
Copies are issued in strict confidence and shall not be reproduced or copied, or used as the basic of manufacture or sale of apparatus without permission			