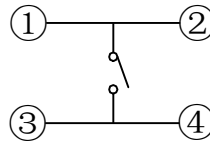
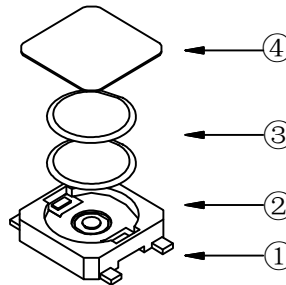
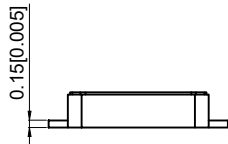


PCB. Welding diagram  
PCB.焊接图



Circuit diagram  
电路图



SPECIFICATION

规范  
 Rating: 50mA.12V DC  
 额定值: 50mA.12V DC  
 Insulation resistance:  $\geq 100M\Omega$   
 绝缘电阻:  $\geq 100M\Omega$   
 Dielectric strength:  $\geq 250V$  AC 1 min  
 抗电强度:  $\geq 250V$  AC 1 min

Contact resistance:  $\leq 100m\Omega$  max  
 接触电阻:  $\leq 100m\Omega$  max  
 Travel:  $0.20 \pm 0.1mm$   
 行程:  $0.20 \pm 0.1mm$   
 Lifetime: 200000 times  
 寿命: 200000 times

TP1612 □ □ □ □  
 Height  
 08:0.8MM  
 Actuation Force  
 18 : 180gf  
 26 : 260gf

6	Cover plate 盖板	SUS	1	Black 黑色
5	Stem 按钮	PAA	1	Temperature resistance of 280 耐温280°C
4	waterproofing membrane 防水膜	Silicone rubber 硅胶	1	Black heat-resistant 280 黑色耐温280°C
3	Reed 簧片	SUS	1	Silver overlay 覆银
2	Base 底座	PPA	1	Temperature resistance of 280 耐温280°C
1	Pin 引脚	Brass 黄铜	1	Silvering 镀银
NO 序号	Part name 部件名	Material 材料	QTY 数量	Remark 备注

A4				
A3				
A2				
A1				
REV	DATE	REVISION	DESCRIPTION	ISSUE



COMMON TOLERANCE	
X.XX	$\pm 0.10$
X.X	$\pm 0.15$
X	$\pm 0.25$
ANGULAR	—

UNIT	MM	PROJECTED		PRODUCT NAME: TP1612 □ □ □ □
DRAWN BY	SHUHAO	CHECKED BY	COCO	MODEL NO:
DATE	2019	APPROVAL B	ALEN	Https: <a href="https://www.rocpcu.tw">www.rocpcu.tw</a>
<b>ROCPCU TECHNOLOGY CO.,LTD</b>				
Copies are issued in strict confidence and shall not be reproduced or copied, or used as the basic of manufacture or sale of apparatus without permission				